

# SHADES OF GRAY

GALLERY SHOW SEPTEMBER 16TH

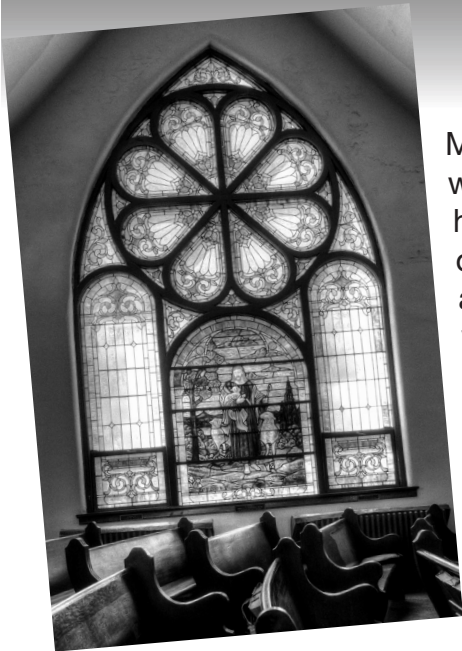
During the Art and Music Festival

Submissions will be September 14 & 15 from 6 to 8pm

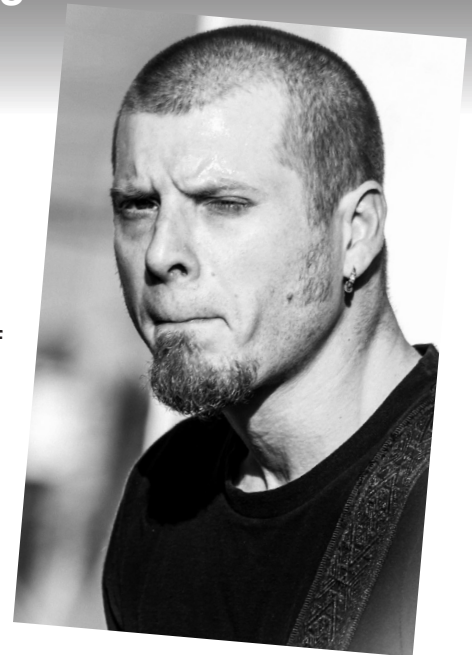
\$10 Per Submission

Unlimited number of submissions - NO SIZE LIMIT

*Monotone images only please*



Monochrome photography is photography where the image produced has a single hue, rather than recording the colors of the object that was photographed. It includes all forms of black-and-white photography, which produce images containing tones of grey ranging from black to white.[1] Other hues besides grey, such as sepia, cyan or brown can also be used in monochrome photography.[2] Monochrome photography is mostly used for artistic reasons in the contemporary world. from Wikipedia



Black and White photography is more about the feel of subject. Composition and a strong subject matter are keys to a successful image. And if any of you have wondered about the grain slider in lightroom, this is one place you can use it to your advantage. It gives black and whites a more film look, If that's what you seek.

Artists may submit colored pencil sketches, charcoal drawing or whatever fits the parameters of being a monotone image,

